

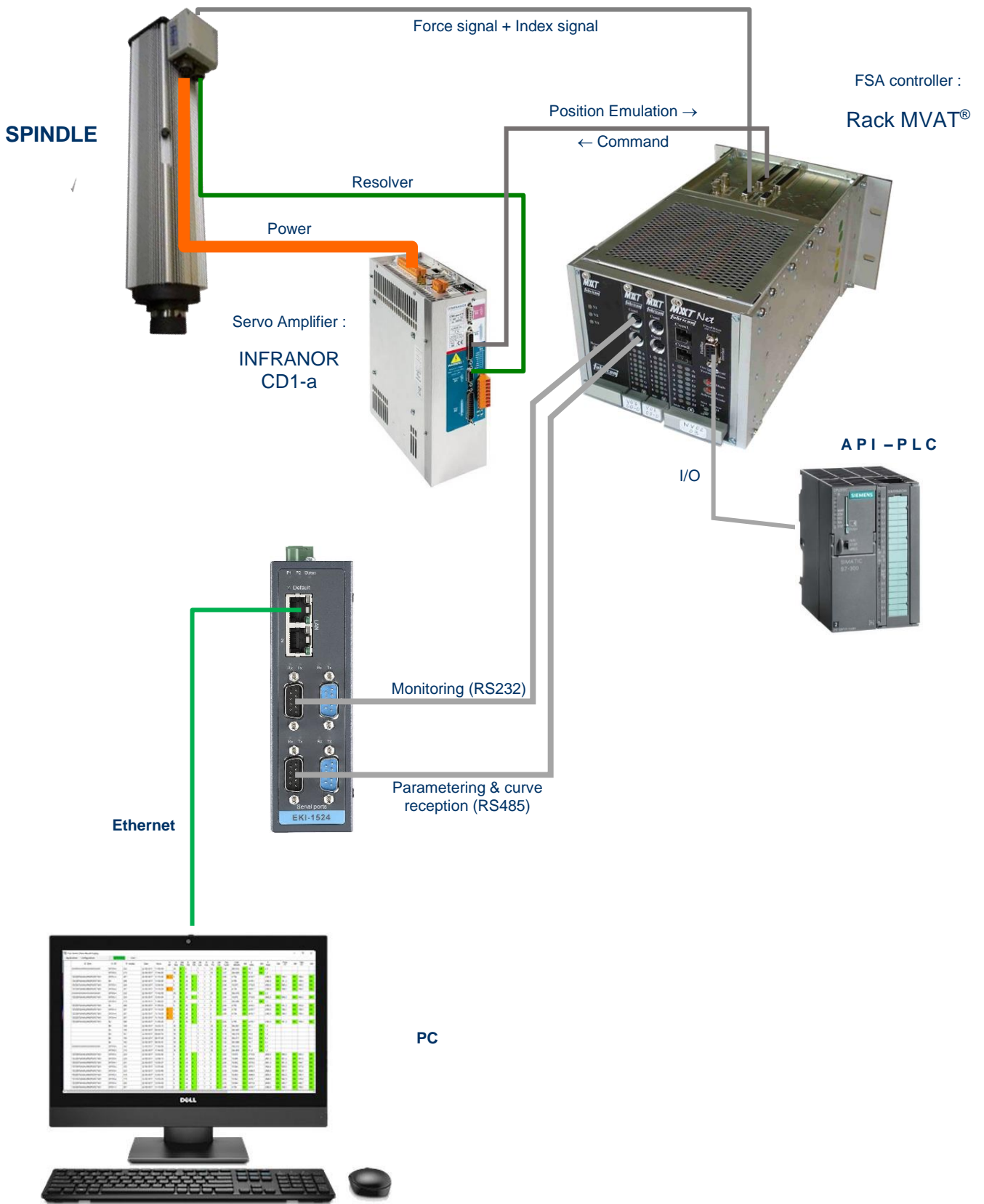


EKI 1524 Setting for MVAT purpose

Table of contents

1	Synoptic	2
2	EKI1524 setting.....	3
2.1	Physical comPort Configuration	3
2.2	Create Virtual portson the PC.....	6

1 Synoptic

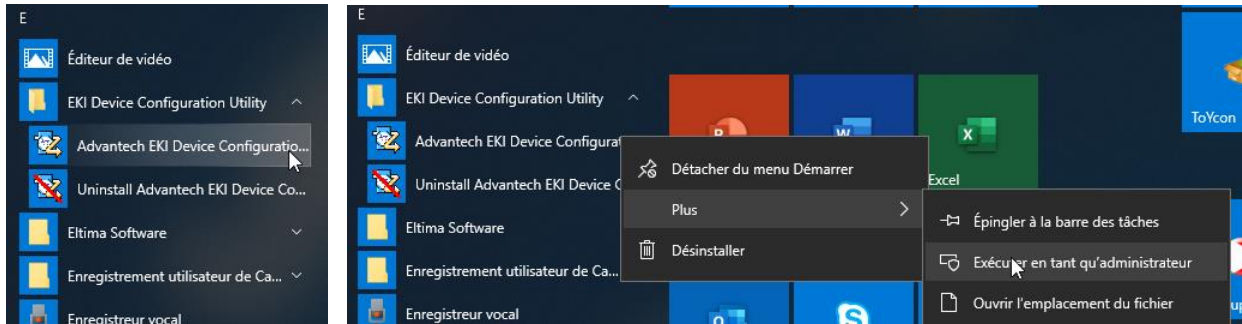


2 EKI1524 setting

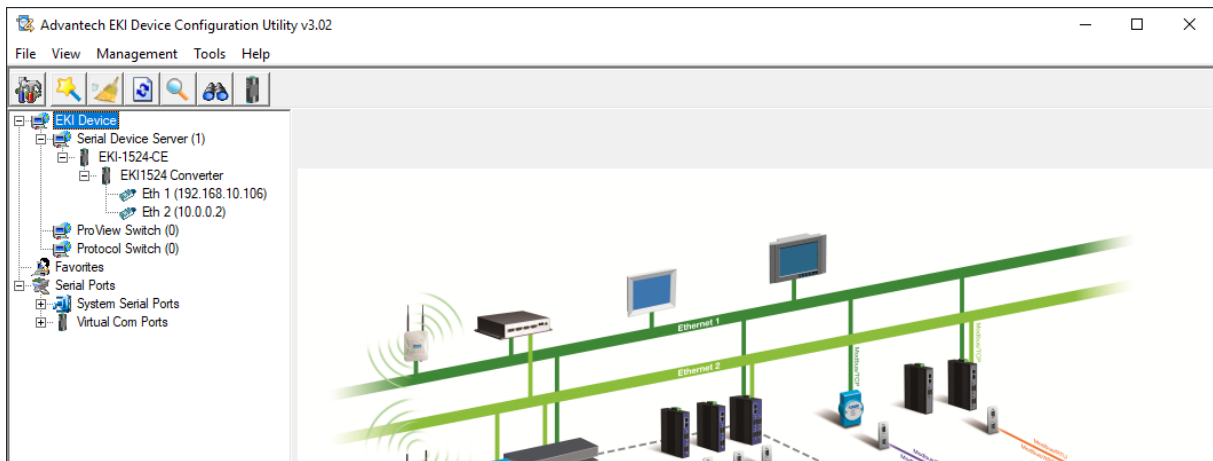
2.1 Physical comPort Configuration

Start « Advantech EKI Device Configuration utility » with administrator privileges :

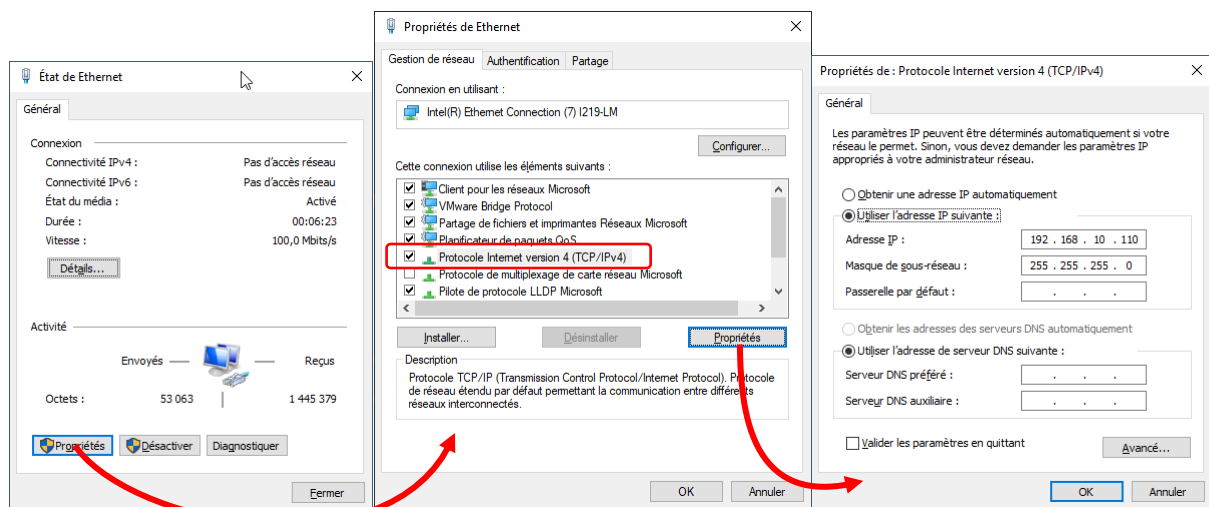
- right click,
- Then « Plus » (« more »),
- Then « Execute as administrator »



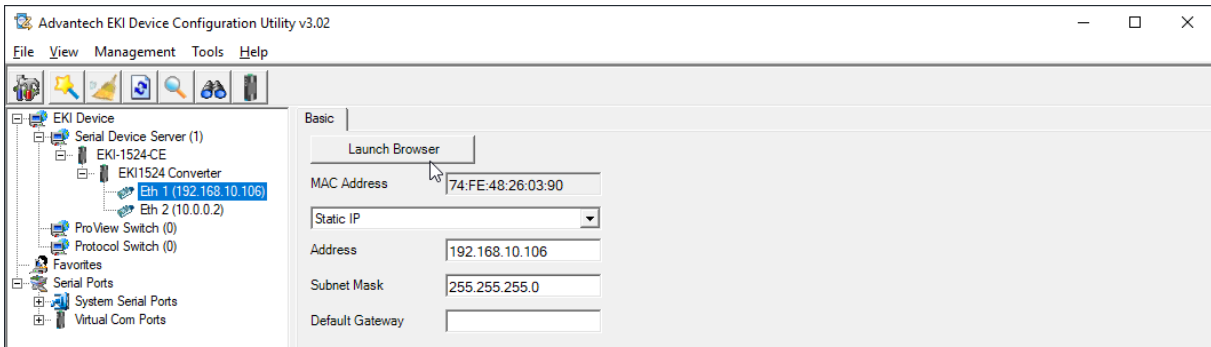
Software starts, then detects all the devices found on the net : (in this example, only 1 EKI1524)



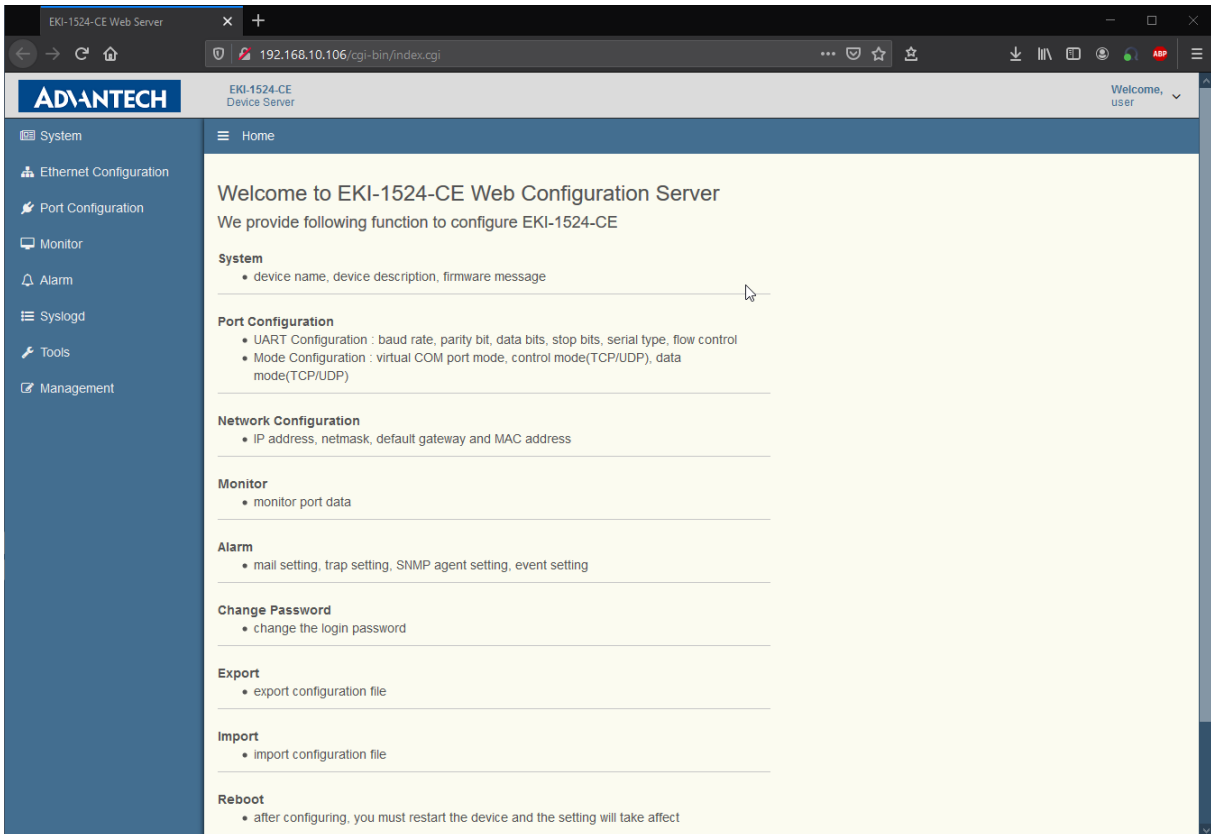
Configure the Ethernet port of the PC to be able to communicate with the web interface of the device : (here, we choose an fixed IP for the PC : 192.168.10.110)



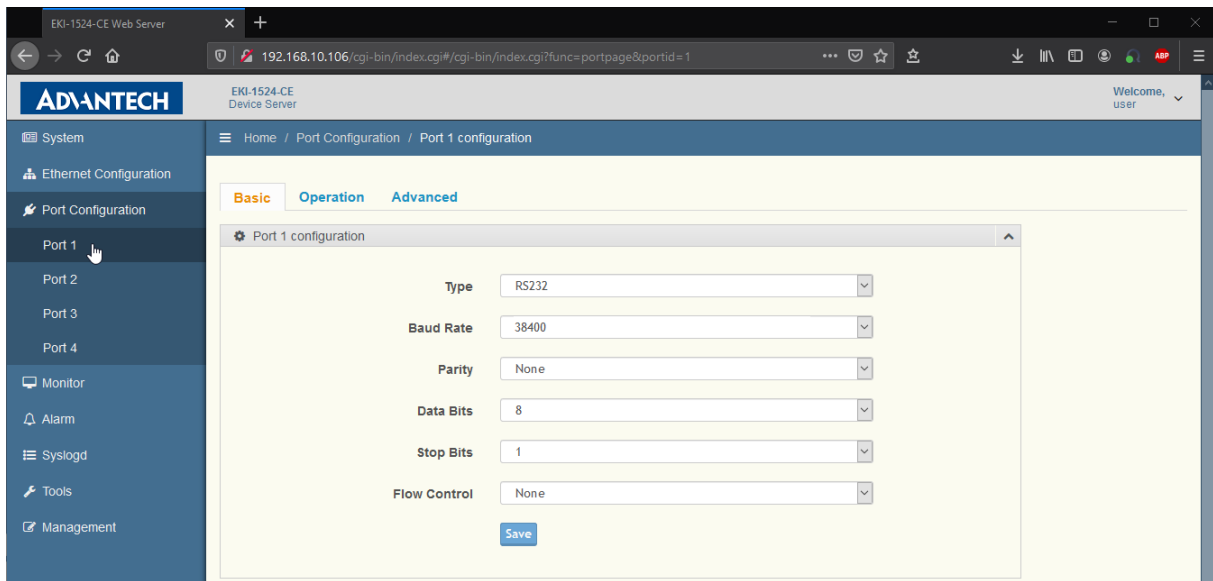
Then launch the web interface, by clicking on the button « Launch Browser », after selecting port Ethernet n°1 :



Following page is opened :



Then go in « Port configuration » menu, and adjust parameters for each port one by one, using hereafter table :



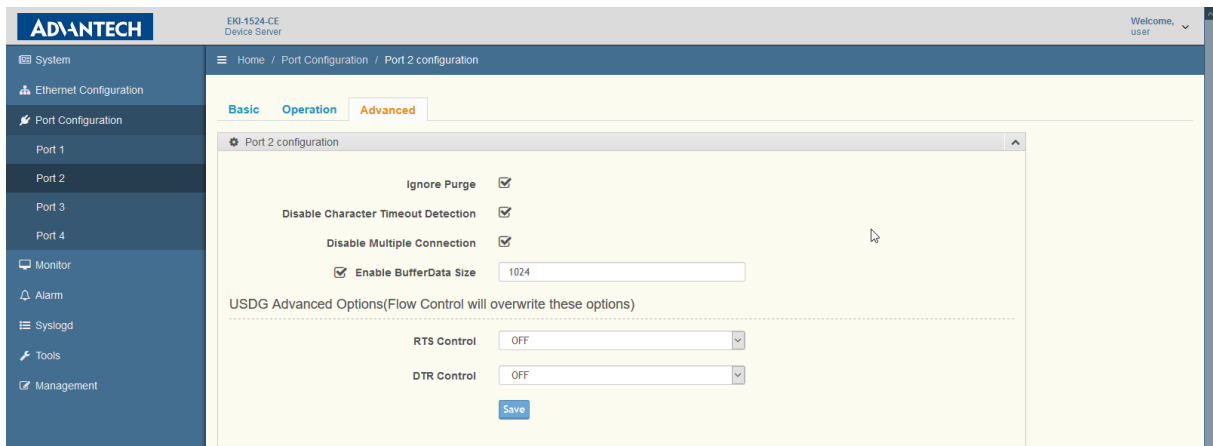
Case n°1 : 1 press

Port n°	Usage	Type	Baud rate	Parity	Data Bits	Stop Bits	Flow Control
Port 1	Terminal MVAT	RS232	38 400	None	8	1	None
Port 2	Com. Rhapsodie.Net	RS485	115 200	None	8	1	None
Port 3	Variateur Infranor	RS232	19 200	None	8	1	None
Port 4	<i>Not Used</i>						

Cas n°2 : 2 presses

Port n°	Usage	Type	Baud rate	Parity	Data Bits	Stop Bits	Flow Control
Port 1	Terminal MVAT Presse 1	RS232	38 400	None	8	1	None
Port 2	Com. Rhapsodie.Net	RS485	115 200	None	8	1	None
Port 3	Terminal MVAT Presse 2	RS232	19 200	None	8	1	None
Port 4	Com. Rhapsodie.Net	RS485					

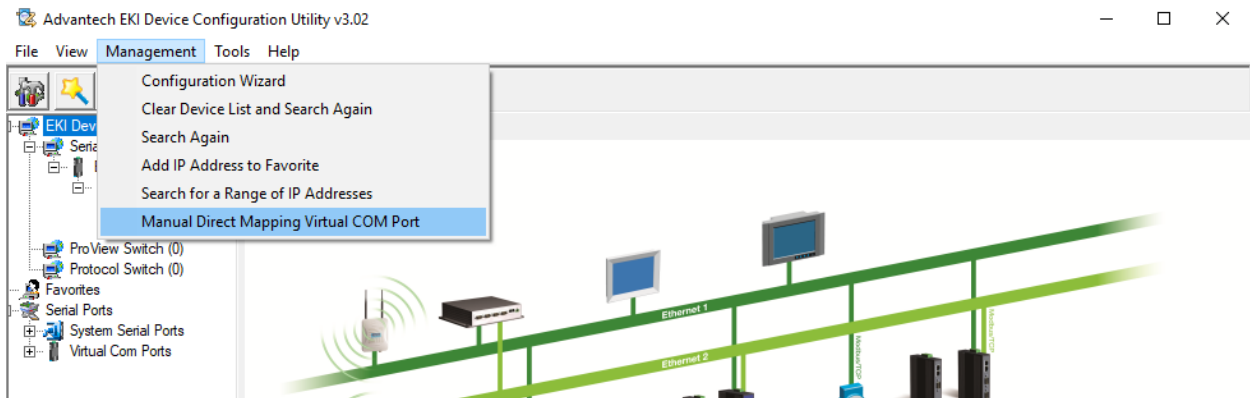
Remark : For the RS485 comPort, you have to go in the « Advanced » page, and parameter like hereabove :



2.2 Create Virtual portson the PC

For each physical port settled and used, we're going to create a virtual port on the PC.

In the EKI Device Configuration utility, click on « Management/Manual Direct Mapping Virtual Port » :



The following window is open, then :

- Select the right device
- Enter Eth1 IP address
- Enter Eth2 IP address
- Select the physical port targeted
- Choose the comPort number to create

And do it again for each port to create.

Note : for the Infranor servo drive, choose comPort number between 1 end 8, because Infranor Software does not recognize other Comport.

Then the created Comport are displayed in the drop-down list :

